

# Sustainable Development Goals (SDG) Interlinkages Analysis and Visualisation

*A practical tool supporting SDG integration and  
policy coherence*

**Dr. Xin Zhou**

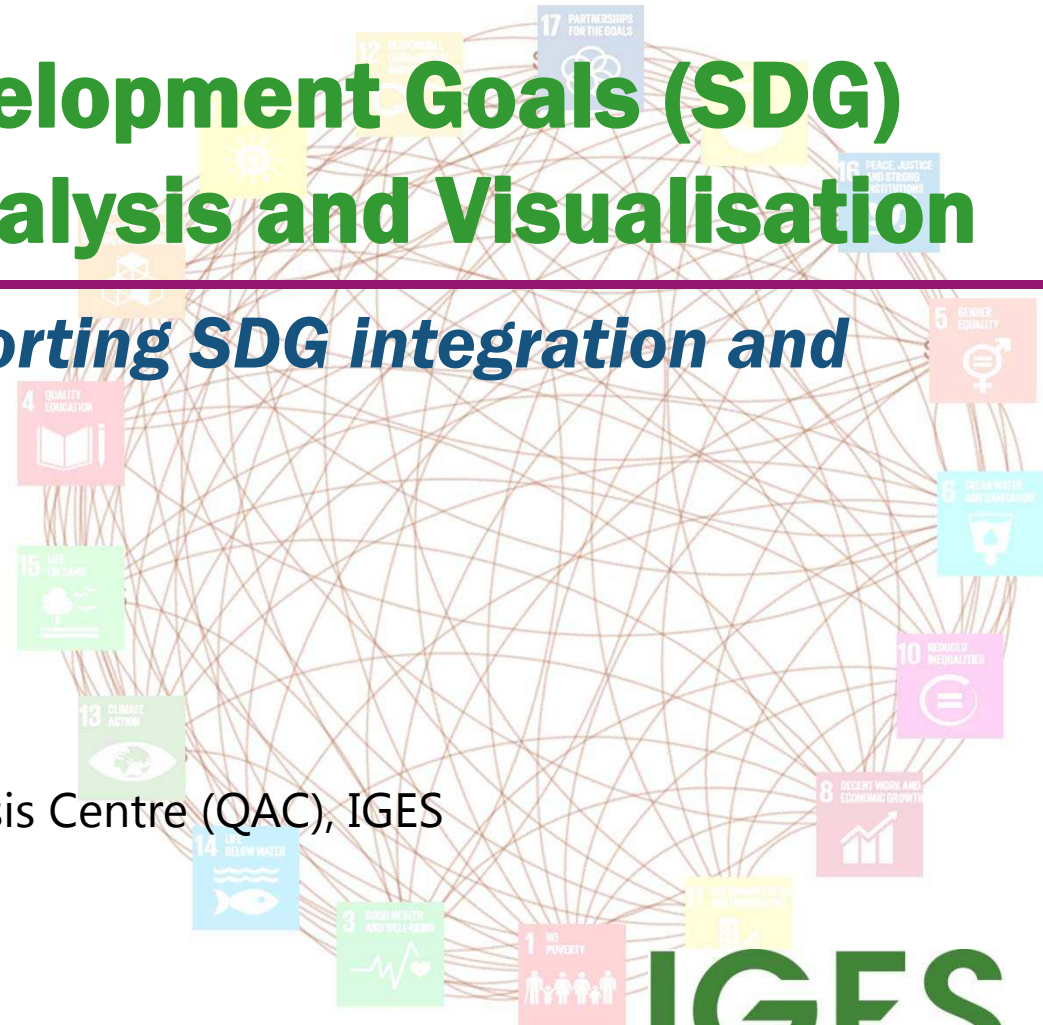
Research Leader

Strategic and Quantitative Analysis Centre (QAC), IGES

*Regional Knowledge Sharing Workshop, organised by ADB, UN  
Environment and ESCAP, 21-22 February 2018, UNCC, Bangkok*

**IGES**

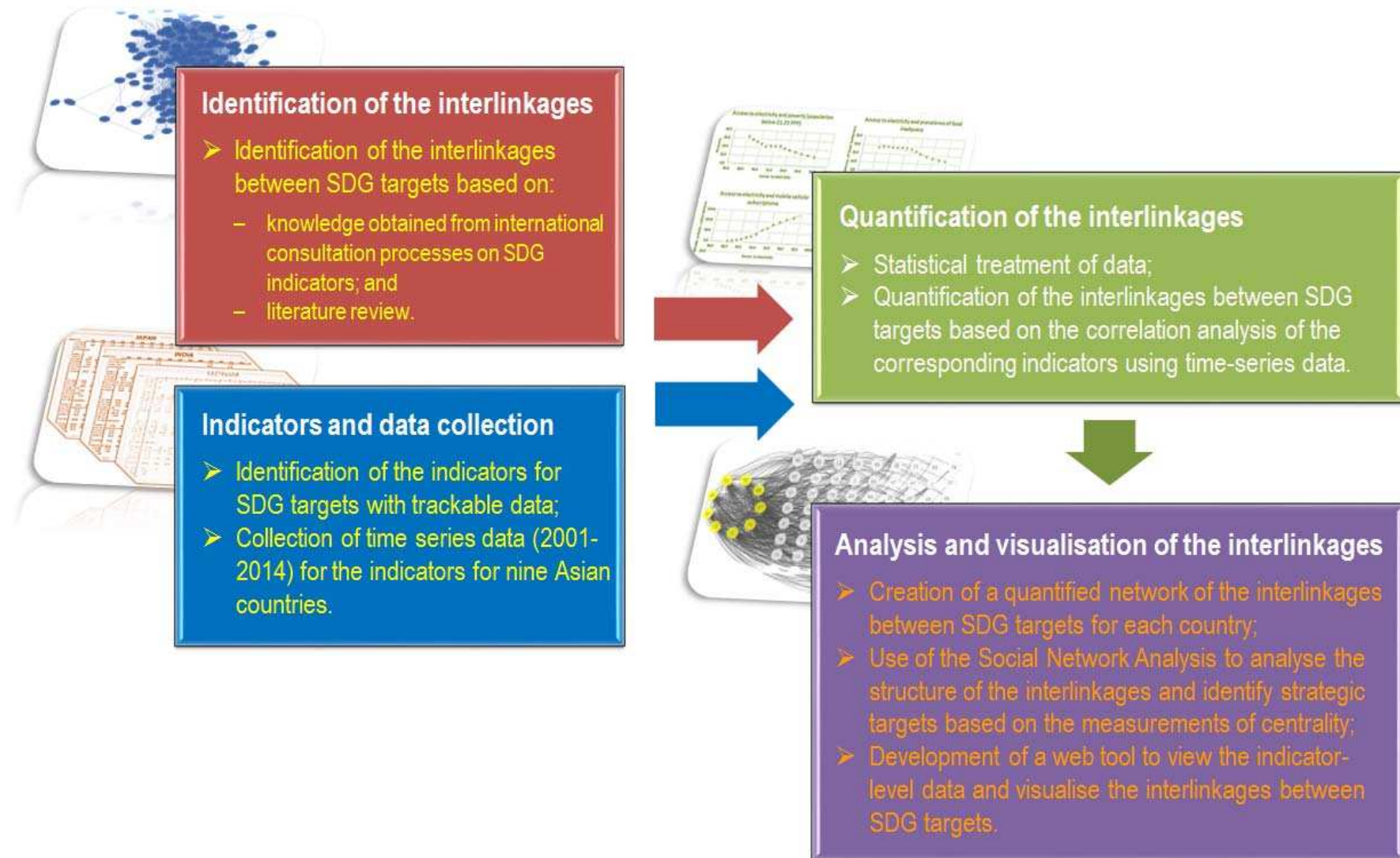
Institute for Global  
Environmental Strategies



# Importance of SDG interlinkages analysis and existing knowledge gaps for SDG integration

- 17 SDGs and 169 targets inherently connect with each other forming an indivisible network for delivering sustainability from a systemic perspective.
- SDG integration has been highly recognised through out the negotiation process of SDGs formation as well as in the planning and reporting processes.
- Understanding the interlinkages within and between SDGs is important for SDG integration to address critical issues such as:
  - *How will achieving one target impact on achieving other targets?*
  - *How strong are the impacts?*
  - *Where are the areas of SDG synergies or trade-offs?*
  - *How countries are different in terms of SDG interlinkages, etc.*

# IGES' innovative and practical tool on SDG interlinkages analysis and visualisation



# IGES SDG Interlinkages and Data Visualisation Web Tool Version 1.0 (free access at <https://sdginterlinkages.iges.jp/>)

**1 Select One Country**  
 ○ Bangladesh  
 ○ Cambodia  
 ○ China  
 ○ India  
 ○ Indonesia  
 ● Japan  
 ○ Republic of Korea  
 ○ Philippines  
 ○ Viet Nam

**2 Select Sustainable Development Goals (SDGs)**  
 10 11 12 13 14 15 16 17

**3 Select SDG Targets & Indicators (See more)**  
 Goal 13. Climate action  
 13.1 Strengthen resilience to climate change  
 13.2 Integrate climate change measures into national policies  
 13.3 Raise awareness on mitigation and adaptation  
 13.a Finance climate change mitigation  
 13.b Enhance capacity for climate change planning

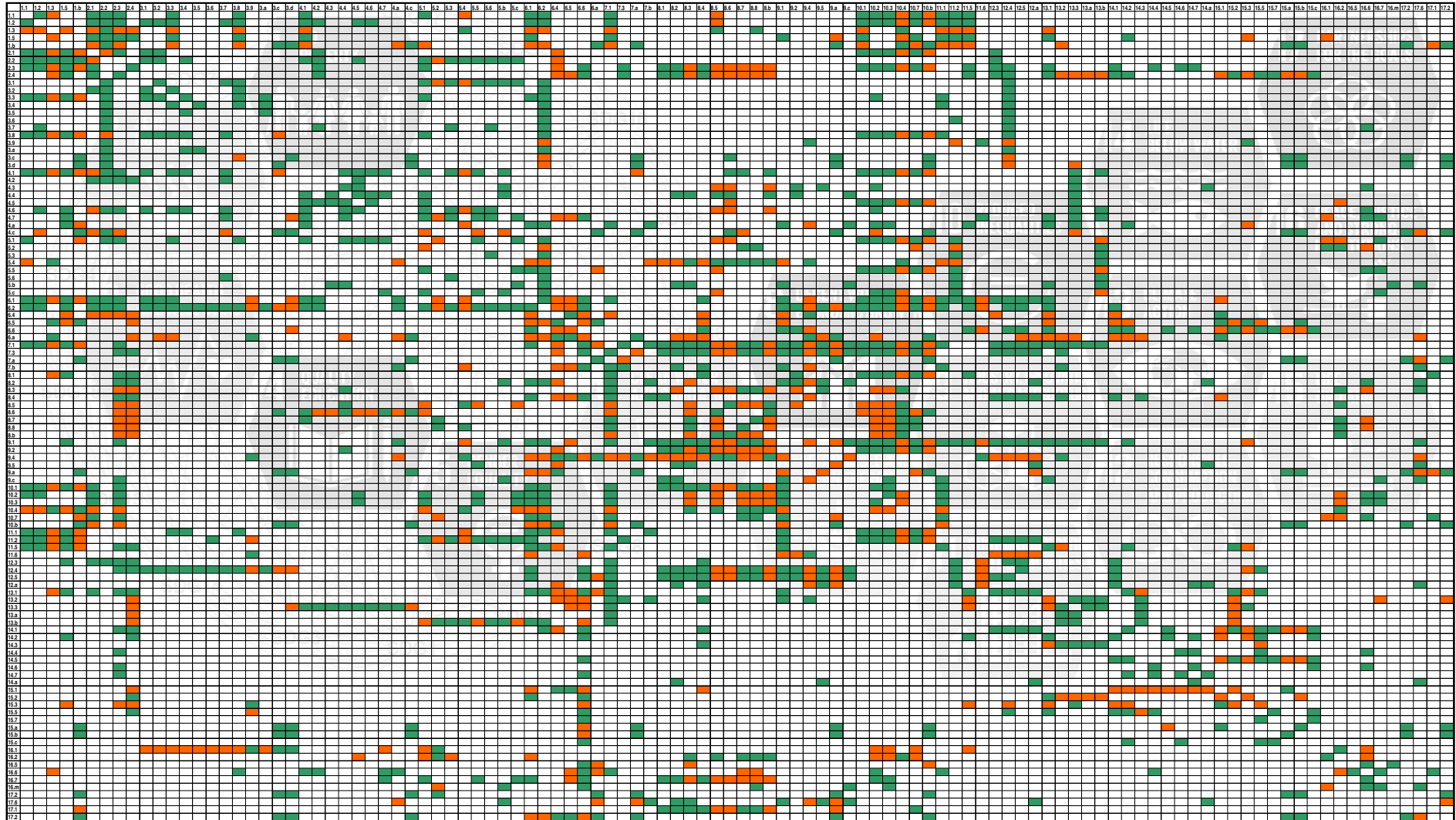
**4 For example, here we selected Japan, Goal 13 on climate action and Target 13.2 on integrating climate change measures into national policies. Target 13.2 has potential synergies with many targets of Goal 7 (energy) and other targets under Goal 13 but possible trade-offs with some targets of Goal 8 (jobs and growth), Goal 9 (Industry and infrastructure) and Goal 6 (water and sanitation).**

**6 Visualisation of interlinkages in a network**  
 Japan  
**Economic targets**  
**Social targets**  
**Means of implementation**  
**Other environmental targets**

Note: i) Each node represents one SDG Target, e.g. Target 1.1, with yellow ones indicating the selected target.  
 ii) Each line with an arrow linking two nodes represents a directional/causal link between two Targets, e.g. from Target 1.1 to Target 1.2. The value over the line (by putting the cursor on the line) indicates the strength of the linear relationship between the pair of targets.  
 iii) A line in black represents a positive link and a line in red represents a negative link.

Source: A snapshot taken from IGES SDG Interlinkages and Data Visualisation Web Tool for Japan.

# Country-specific dashboards indicating potential reinforcing (green) and conflicting (red) linkages



Bangladesh

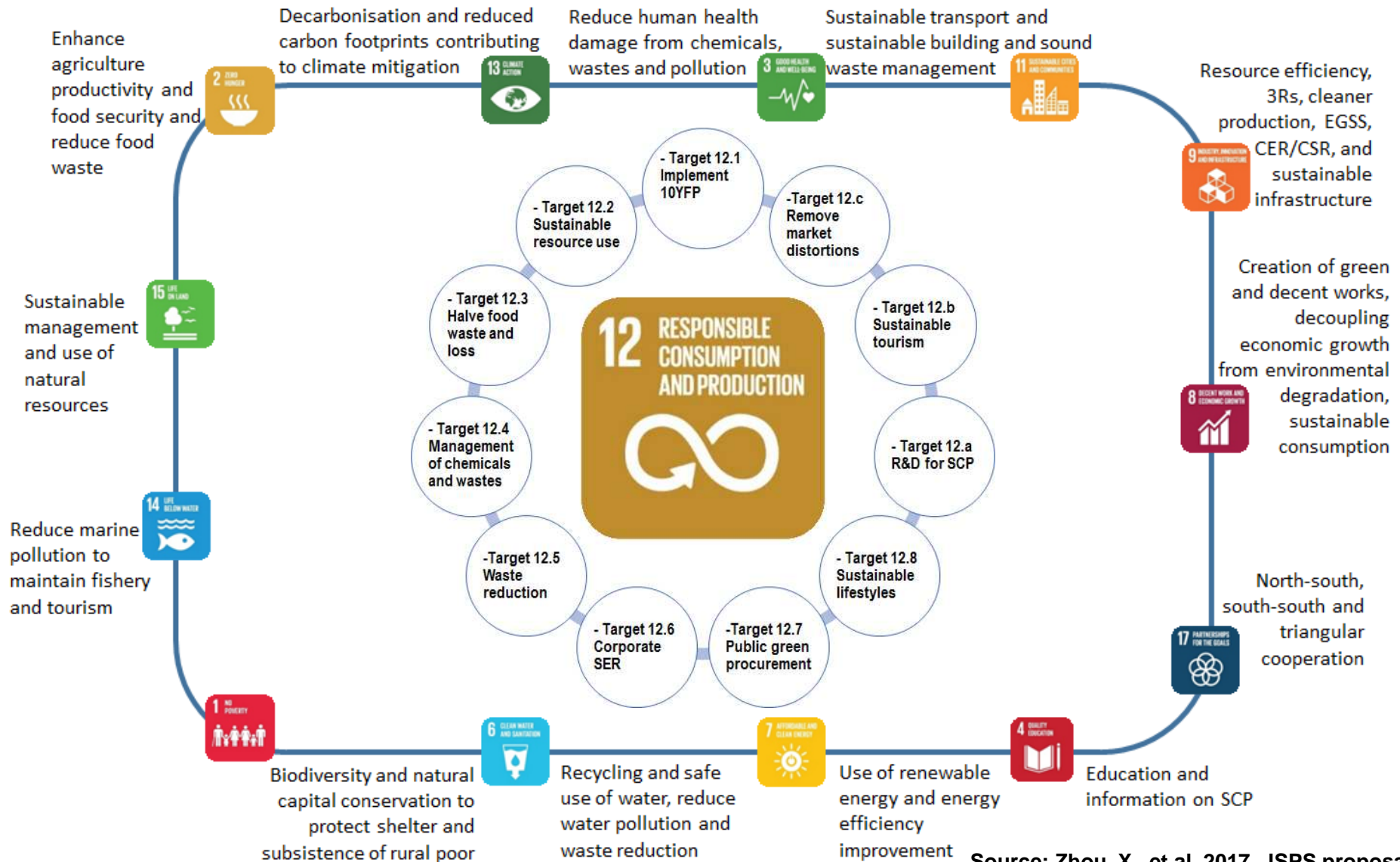
## Using Social Network Analysis techniques, ranking various centrality metrics help identify strategic SDG targets

Rank	In-degree	Out-degree	Degree	Closeness	Eigenvector	Betweenness
1	6.2	6.2	6.2	15.7	2.3	6.2
2	2.3	9.1	7.1	15.c	7.1	12.4
3	6.1	7.1	6.1	14.a	6.1	2.3
4	7.1	6.1	2.3	14.5	10.2	6.6
5	10.2	12.4	9.1	14.6	10.4	2.4
6	6.6	2.4	12.4	14.4	6.2	7.1
7	10.3	2.3	2.4	14.7	10.3	6.1
8	10.4	4.1	6.6	14.3	9.1	9.1
9	8.5	6.a	10.2	5.3	8.5	16.6
10	10.b	7.3	1.b	9.5	10.7	1.b
11	2.4	9.4	5.1	5.6	1.5	13.3
12	9.1	1.b	10.4	15.b	8.3	11.2
13	12.4	5.1	10.3	13.a	2.1	2.2
14	8.3	11.2	4.1	3.a	8.7	5.1
15	10.7	1.2	9.4	3.5	8.8	8.6
16	1.b	6.6	8.5	3.6	2.4	6.a
17	6.4	12.5	11.2	3.2	10.b	8.2
18	2.2	4.c	2.2	14.2	6.4	5.b
19	5.1	4.6	1.5	3.4	8.b	10.b
20	1.5	10.2	10.b	15.5	11.1	13.b

Source: Zhou & Moinuddin, 2017. IGES Research Report No. RR1602.

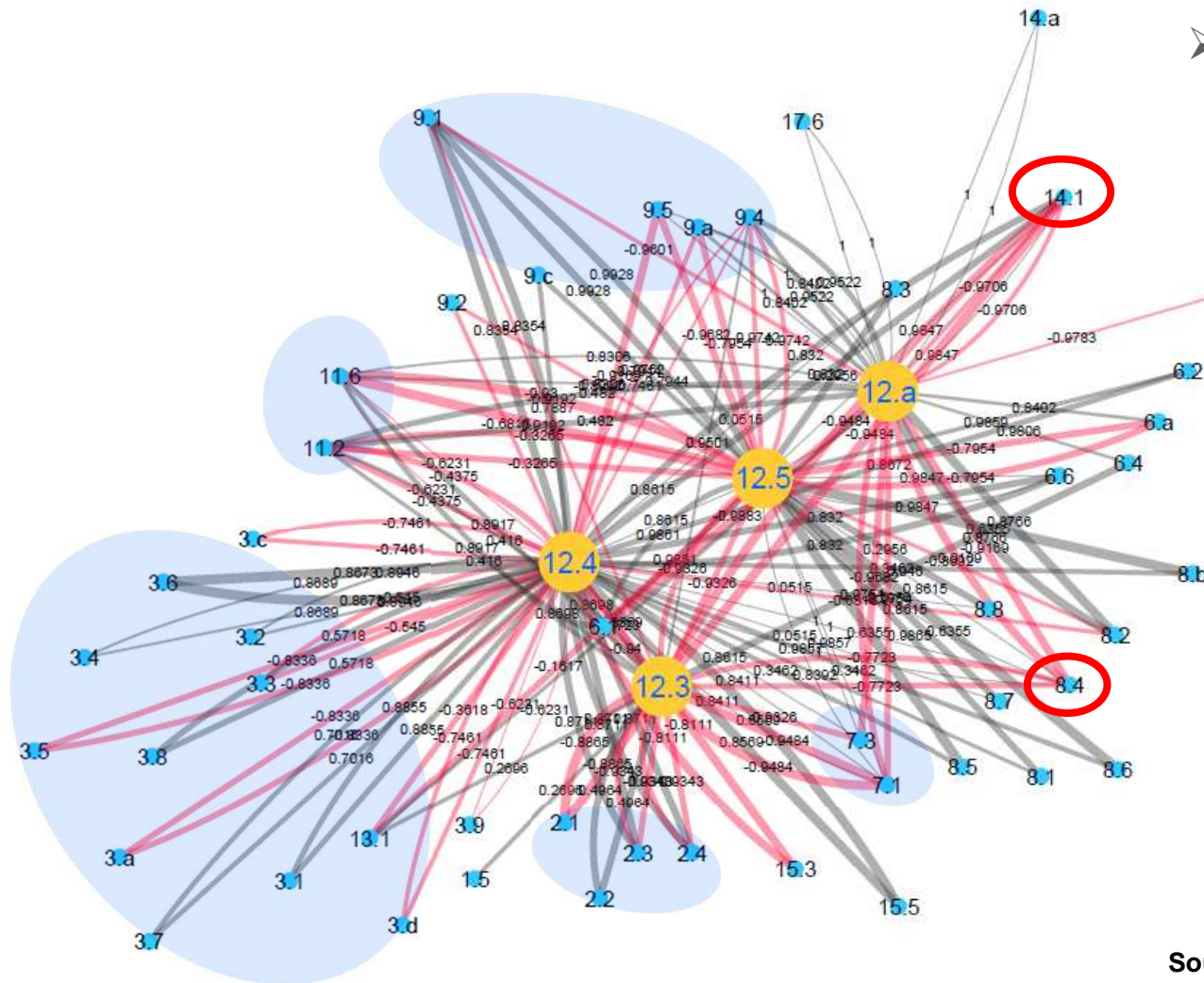
[https://sdginterlinkages.iges.jp/files/IGES\\_Research%20Report\\_SDG%20Interlinkages\\_Publication.pdf](https://sdginterlinkages.iges.jp/files/IGES_Research%20Report_SDG%20Interlinkages_Publication.pdf)

# A conceptual framework of Goal 12 as an overarching theme links extensively with other goals and targets



Source: Zhou, X., et al. 2017. JSPS proposal.

# Features of the quantified SCP interlinkages with other SDG targets: An example in Indonesia



## ➤ Major existing conflicts

- Goal 2 Zero hunger
- Goal 3 Health and well-being
- Goal 7 Affordable and clean energy
- Goal 9 Industrial, innovation and infrastructure
- Goal 11 Sustainable cities
- 8.4 Improve resource efficiency
- 14.1 Reduce marine pollution

Source: Zhou, X., et al. 2017. JSPS proposal.

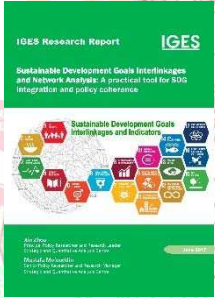


# Applications of the tool for SDG integration




# Thank you!

Contact: [zhou@iges.or.jp](mailto:zhou@iges.or.jp)



Zhou, X., Moinuddin, M., 2017. Sustainable Development Goals Interlinkages and Network Analysis: A practical tool for SDG integration and policy coherence. IGES Research Report. Hayama: IGES. Available at: [https://sdginterlinkages.iges.jp/files/IGES\\_Research%20Report\\_SDG%20Interlinkages\\_Publication.pdf](https://sdginterlinkages.iges.jp/files/IGES_Research%20Report_SDG%20Interlinkages_Publication.pdf).



Zhou, X., Moinuddin, M., Li, Y., 2017. SDG Interlinkages and Data Visualisation Web Tool. Hayama: IGES. Available at: <https://sdginterlinkages.iges.jp/visualisationtool.html>.